

# PLACING BOOM 34/38M R-FOLD

**Self Climbing Placing System  
on Tubular Column**

**34/38m R-Fold Boom**

**4-Section**

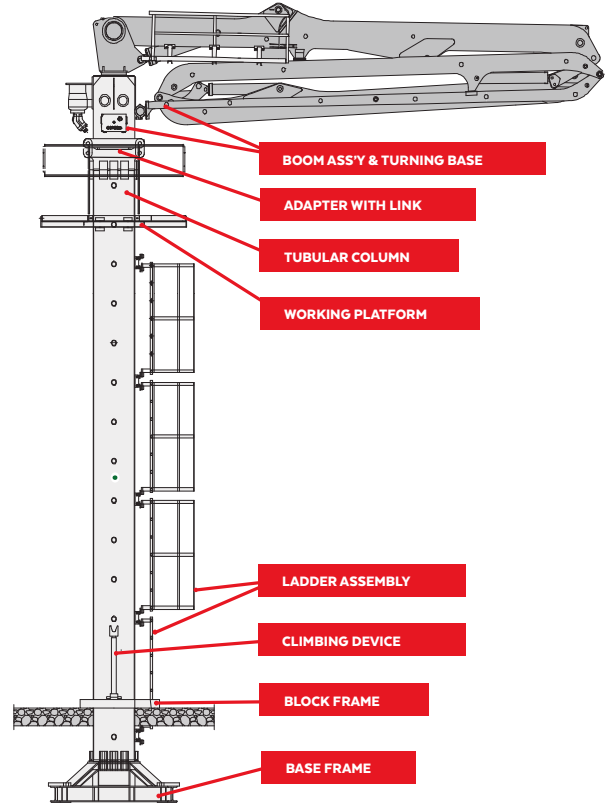
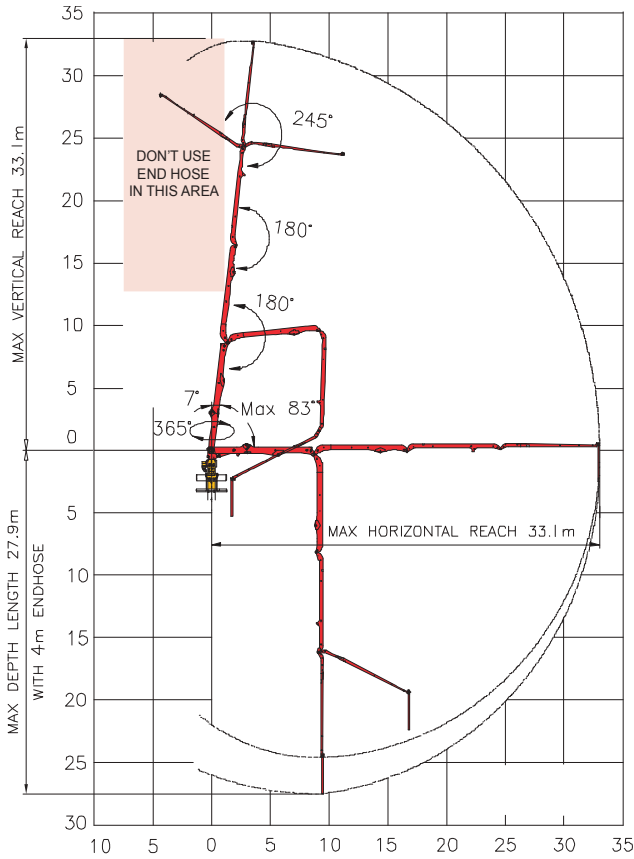
## R-FOLD BOOM DESIGN

HORIZONTAL REACH	<b>33.1m (108'7")</b>
VERTICAL REACH	<b>33.1m (108'7")</b>
REACH DEPTH	<b>27.9m (91'6")</b>
1ST SECTION	<b>8.7m (28'7")</b>
2ND SECTION	<b>7.9m (25'11")</b>
3RD SECTION	<b>8.1m (26'7")</b>
4TH SECTION	<b>8.4m (27'7")</b>
END HOSE LENGTH	<b>3.0m (10')</b>

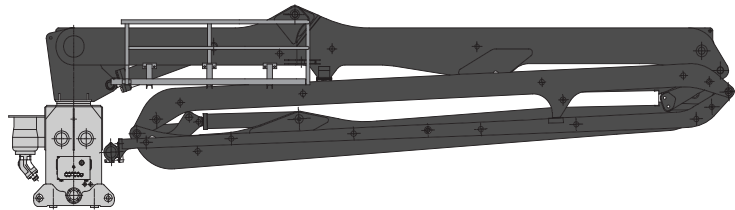
## BOOM ARTICULATION

1ST SECTION	<b>-2° - 83°</b>
2ND SECTION	<b>180°</b>
3RD SECTION	<b>180°</b>
4TH SECTION	<b>245°</b>
ROTATION	<b>365°</b>
DELIVERY LINE	<b>DN 125mm(5")</b>
ELECTRIC SYSTEM	<b>AC460V / 60HZ</b>
CONTROL SYSTEMS	<b>Wireless Remote</b>
ELECTRIC MOTOR	<b>15kW</b>

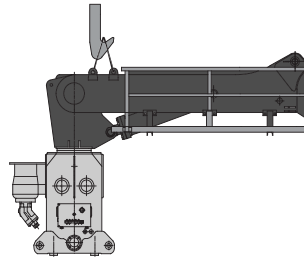
## BOOM PUMP REACH



**BOOM ASSEMBLY & TURNING BASE:  
8,890Kg (19,600 lbs.)**



**1ST BOOM PART 1:  
3,950Kg (8,708 lbs.)**



**2ND BOOM PART 2:  
4,940Kg (10,890 lbs.)**

