

PLACING BOOM

33 / 37M

Z-FOLD

**Self Climbing Placing System
on Tubular Column**

33/37m Z-Fold Boom

4-Section

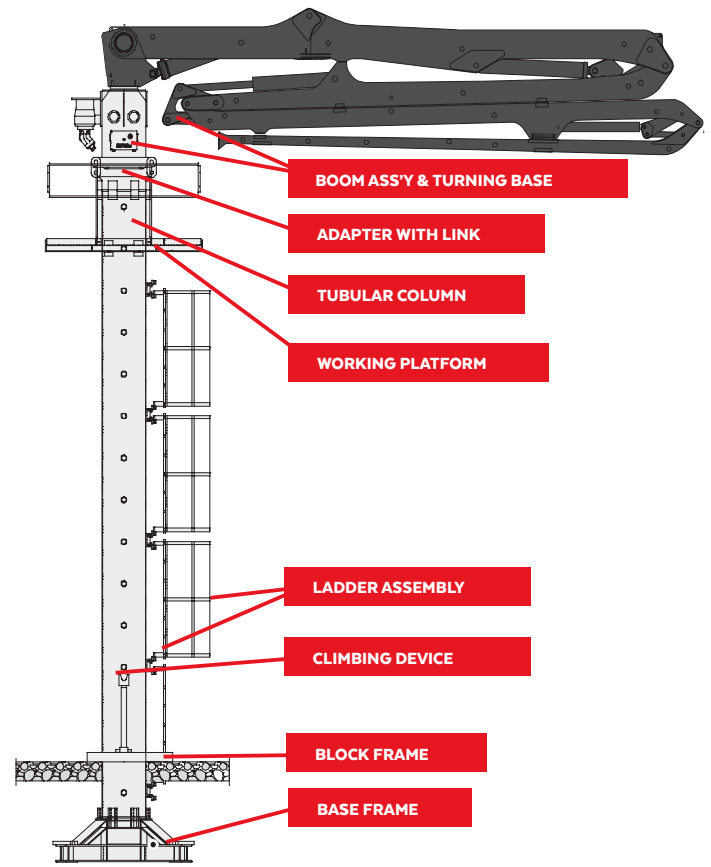
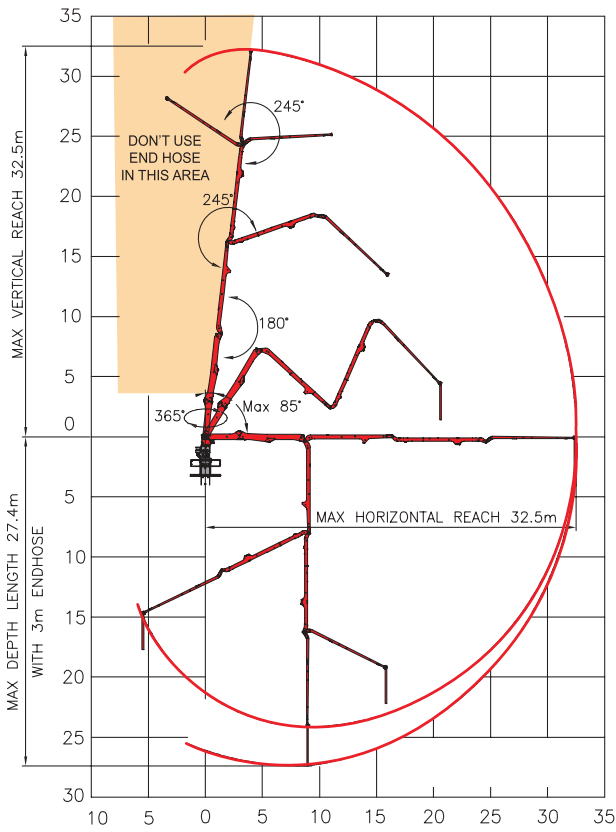
R-FOLD BOOM DESIGN

HORIZONTAL REACH	32.5m (106'8")
VERTICAL REACH	32.5m (106'8")
REACH DEPTH	27.4m (89'11")
1ST SECTION	8.7m (28'7")
2ND SECTION	7.7m (25'3")
3RD SECTION	8.2m (26'11")
4TH SECTION	7.9m (25'11")
END HOSE LENGTH	3.0m (10')

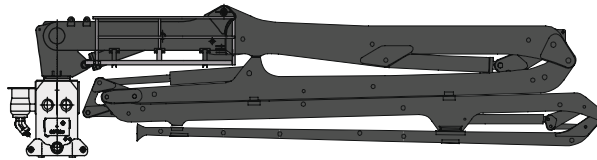
BOOM ARTICULATION

1ST SECTION	-2° - 83°
2ND SECTION	180°
3RD SECTION	245°
4TH SECTION	245°
ROTATION	365°
DELIVERY LINE	DN 125mm (5")
ELECTRIC SYSTEM	AC460V / 60HZ
CONTROL SYSTEMS	Wireless Remote
ELECTRIC MOTOR	15kW

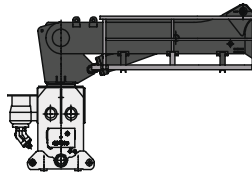
BOOM PUMP REACH



**BOOM ASSEMBLY & TURNING BASE:
8,420Kg (18,563 lbs.)**



**1ST BOOM PART 1:
3,590Kg (7,914 lbs.)**



**2ND BOOM PART 2:
4,830Kg (10,648 lbs.)**

