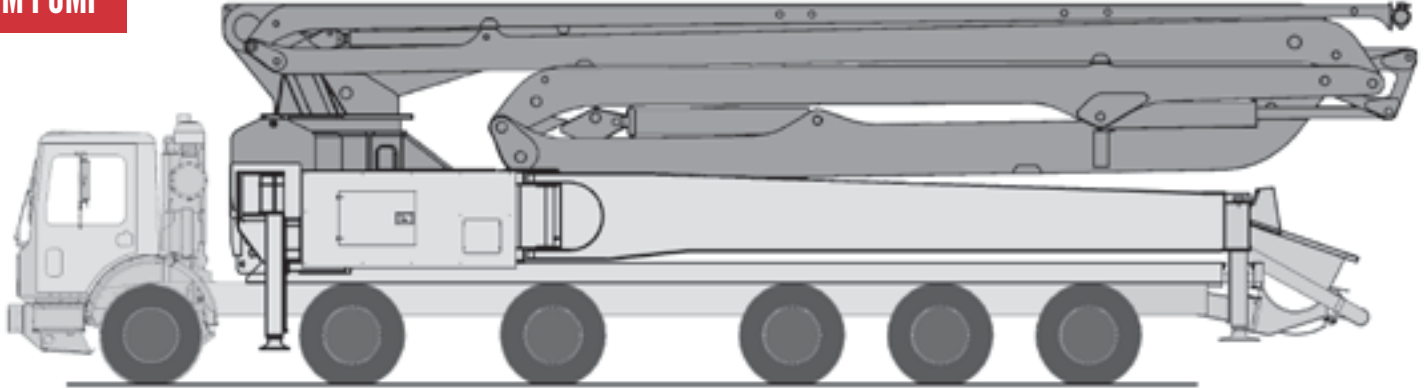




57 METER RZ-FOLD NEW MODEL

5 SECTION X-STYLE

BOOM PUMP



JXRZ 57-5.18*

BOOM SPECIFICATIONS

Vertical Reach	56.2 m (184'5")
Horizontal Reach	51.2 m (168')
Reach from Front - Cabover	46.8 m (153'7")
Unfolding Height	14.8 m (48'7")
1st Section Length	11.1 m (36'5")
2nd Section Length	8.5 m (27'11")
3rd Section Length	9.0 m (29'6")
4th Section Length	11.6 m (38'1")
5th Section Length	12.0 m (39'4")
Outrigger	X-Style
Front Spread	9.3 m (30'6")
Rear Spread	12.5 m (41')

GENERAL SPECIFICATIONS

Pipe Size (ID)	125 mm (5")
Boom Control Valve	Proportional (by HAWE)
Radio Remote:	Dual Wireless Transmitter System
Vibrator	Standard
Water Pump	Hydraulic Power 20 bar (290 psi)
Water Tank	800 L (211 G)
Wear Parts	Carbide
Popular Upgrades [†]	LED Boom Light Kit LED Outrigger Lights Heated Water Tank Heated Hydraulic Tank Air-Cuff Twin Wall Pipe 20 cell Pump Kit

*more options available, ask your sales rep for details.

PUMP SPECIFICATIONS

Output	Rod Side	181 m ³ /h (235 yd ³ /h)
	Piston Side	122 m ³ /h (159 yd ³ /h)
Pressure	Rod Side	85 bar (1233 psi)
	Piston Side	130 [†] bar (1886 psi)
Concrete Cylinder Diameter	230 mm (9")	
Concrete Cylinder Type	Hard Chromed	
Stroke Length	2100 mm (83")	
S-Tube Size	9" X 7"	
Main Oil Pump	Rexroth Hydromatic A11VSO260	
Hydraulic System Pressure	350 bar (5076 psi)	
Lube System (Hopper)	Automatic	
Switching System	Hydraulic	
Hopper Capacity	Easy Clean 600 L (158 G)	
Number of Strokes/Min	34	
Output Control Range	20(26)~164m ³ /(215yd ³ /h)	

*Not to be used through boom pipe.

*Contact your sales representative for alternate chassis options.

www.allianceconcretepumps.com



JXRZ 57-5.18

BOOM PUMP

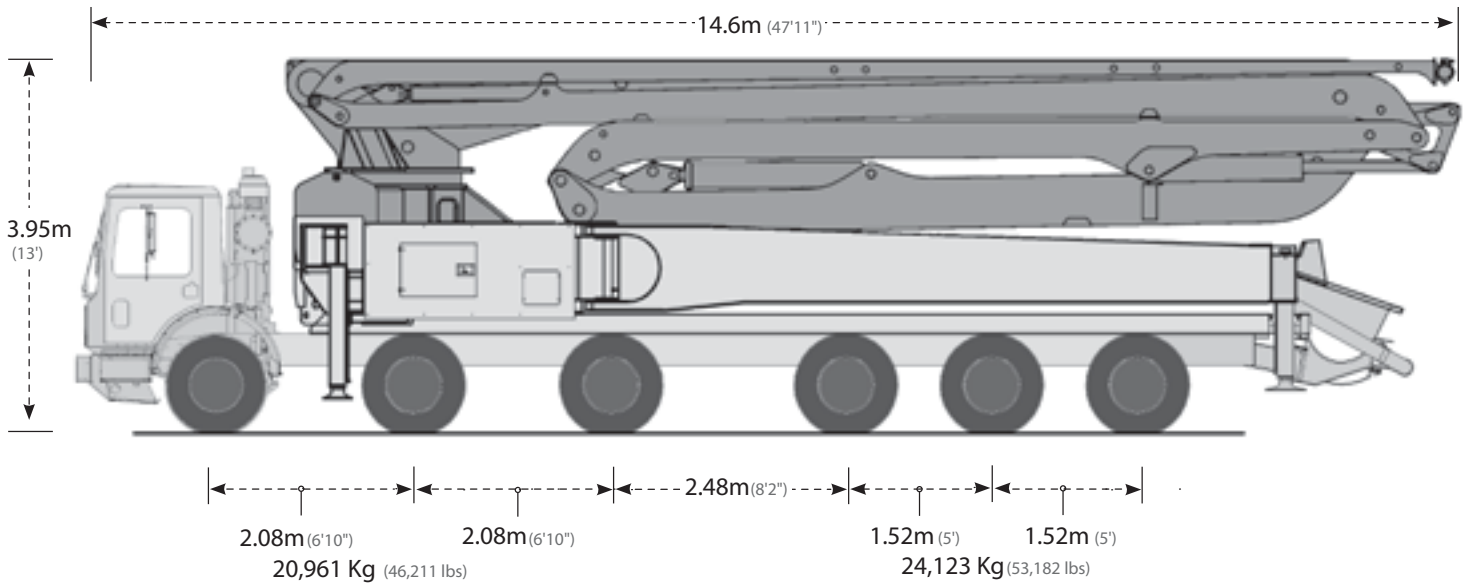


1.888.584.7231



1.888.870.0908

Reach from front : 46.8m (153'7")



DIAGRAMS

